



United States Department of Agriculture

Conservation Stewardship Program



Landscape Conservation Initiatives Longleaf Pine Initiative (LLPI)

The CSP LLPI encourages forest landowners to address priority resource concerns, such as degraded plant condition and inadequate habitat for wildlife, in a comprehensive manner by undertaking additional conservation activities, and by improving, maintaining, and managing existing conservation activities.

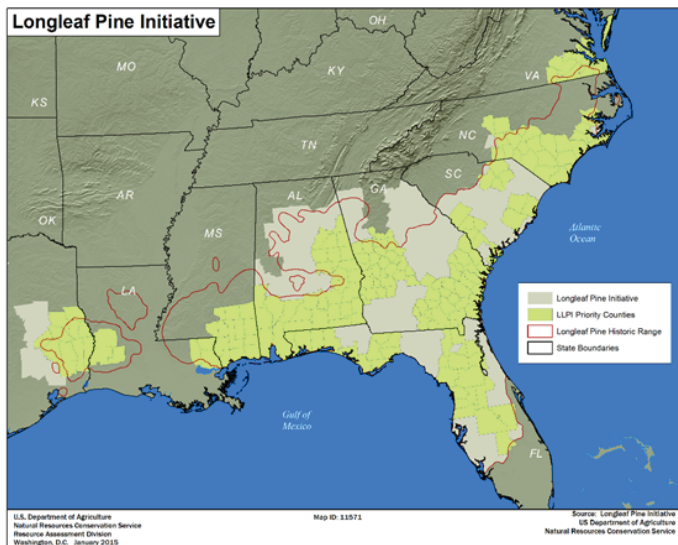
The CSP LLPI targets landowners with longleaf pine forests or woods located within the longleaf pine initiative area (see map below).

Examples of CSP LLP core enhancements include:

Sequential patch burning, or Short-interval burn; Grazing management for improving quantity and quality of food for wildlife or Grazing management for improving quantity and quality of cover and shelter for wildlife; and snags, den trees, and coarse woody debris for wildlife habitat. [there are many more]

Additional Benefits to Applying for CSP through this Initiative:

Through LLPI, NRCS works with producers on private lands to improve the sustainability and profitability of longleaf pine forests and to provide conservation benefits. This effort has resulted in increasing the extent of longleaf pine forests across the region and restoring this unique ecosystem. NRCS provides technical and financial assistance to producers, helping them implement a variety of conservation practices. These practices enable landowners to improve forest and wildlife values through use of prescribed burning and other stand management practices, as well as planting of new forests. NRCS initiated the CSP LLPI in 2015 to encourage longleaf pine forest landowners to continue improving their forests by implementing additional conservation activities on their land.



**NATURAL
RESOURCES
CONSERVATION
SERVICE**

www.nrcs.usda.gov